



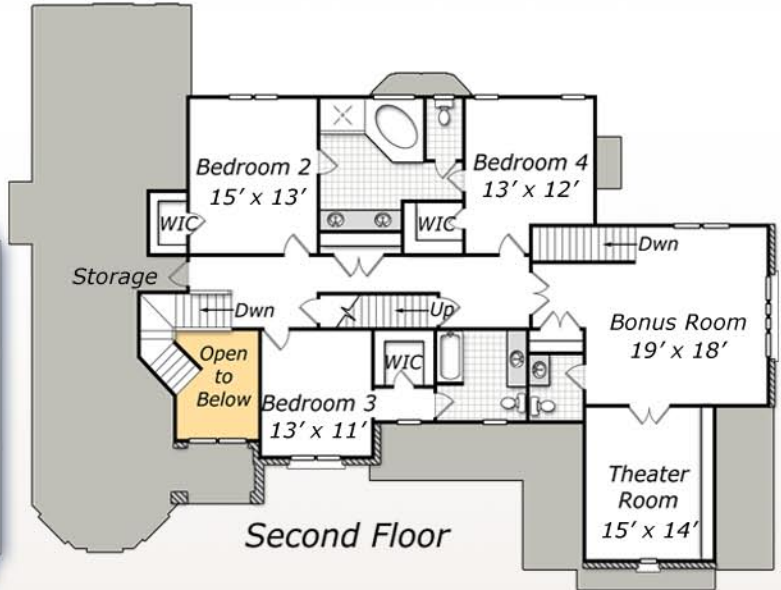
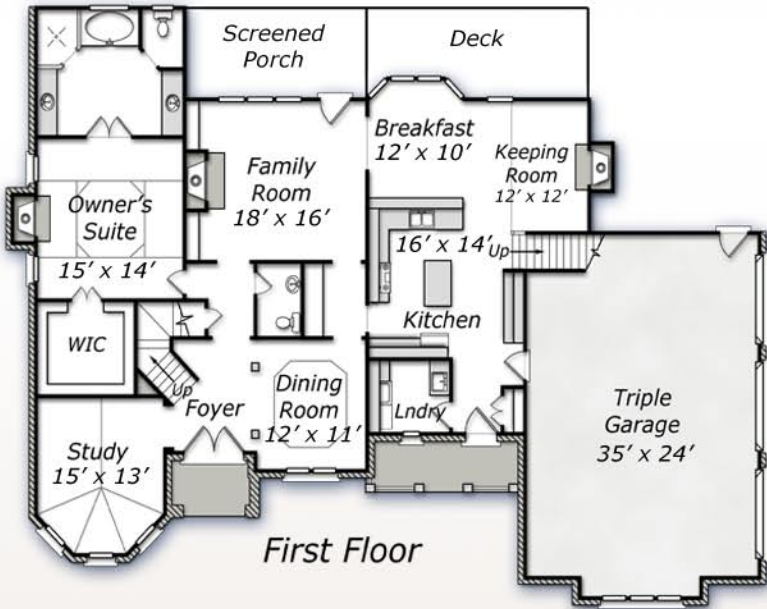
Professional Residential Design

3,624  
Heated  
square feet

Transitional



Lonnie



- 3 full baths and 2 half baths
- Fireplaces in family, owners suite and keeping rooms
- Cathedral ceiling turret study
- Dramatic formal dining room with tray ceiling
- Butler's pantry
- 1st floor owner's suite with giant walk-in closet
- Informal covered mud entry to utility area

- Island kitchen
- Bonus room and theater room
- Private staircase to bonus room
- All bedrooms feature walk-in closets
- Walk-up attic access
- Large 2nd floor storage
- 3 car garage

MIDTOWN DESIGNS  
[www.MidTownDesigns.com](http://www.MidTownDesigns.com)

4816 Six Forks Road - Ste. 202 - Raleigh, NC 27609  
Phone: 919-783-8626 - Fax: 866-908-4307 - Email: Carl@MidTownDesigns.com

**\*\* All information deemed reliable but not guaranteed  
Room sizes are approximate. Refer to construction documents for exact measurements and conditions**

PROFESSIONAL RESIDENTIAL DESIGN